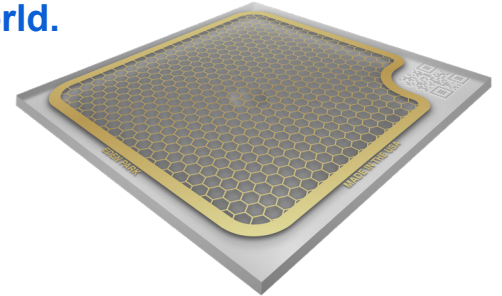


Harness the power of best-in-class continuous disinfection to create safe and healthy environments around the world.

Why worry about viruses that other people introduce?

Our innovative thin-panel technology is engineered to work effortlessly in existing standard fixtures or power to emit Far-UVC 222 nm on surfaces or circulating air to inactivate up to 99.9% of harmful airborne viruses and bacteria. The result is continuous disinfection of both air and surfaces to help halt the spread of harmful pathogens in well-populated spaces.



Product Suite

TrofferShield²²²™

Busy environments require a robust solution. TrofferShield²²² features thin-panel Far-UVC technology integrated into standard LED “troffer” lighting fixtures that fit seamlessly into most 2’x2’ and 2’x4’ tiled drop ceilings. Each TrofferShield²²² fixture provides safe and effective continuous disinfection for a 10’x10’ space with ceilings up to 12’ in height. The built-in LED lighting is designed for adjustable CCT (3500 K, 4000 K, 5000 K).



Plasma Guard²²²™

Many office spaces have recessed or pendant lighting that restricts the use of traditional continuous disinfection solutions. Plasma Guard²²² features thin-panel Far-UVC technology integrated into an innovation screw-in design that allows it to be used in place of existing light bulbs. Each Plasma Guard²²² fixture provides safe and effective continuous disinfection for a 10’x10’ space with ceilings up to 12’ in height. The built-in LED lighting is designed for adjustable CCT (3500 K, 4000 K, 5000 K).



BusShield²²²™

One thing the Covid-19 pandemic has shown is that we were grossly unprepared and uneducated when it comes to the routine disinfecting of our bus fleets. BusShield²²² is small, discrete, and designed specifically for bus transportation. Most buses require just two BusShield²²² fixtures to provide safe and effective continuous disinfection for occupants and drivers.



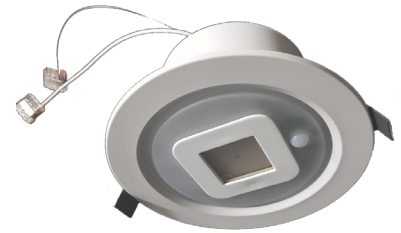
MobileShield²²²™

Sometimes a ceiling-mounted continuous disinfection fixture isn’t an option. MobileShield²²² features thin-panel Far-UVC technology integrated into a small tabletop or wall-mounted device for conference rooms, offices, and mixed-use rooms. Each MobileShield²²² fixture operates via power cord (or a separately sold rechargeable battery pack) to provide continuous disinfection for any small space.



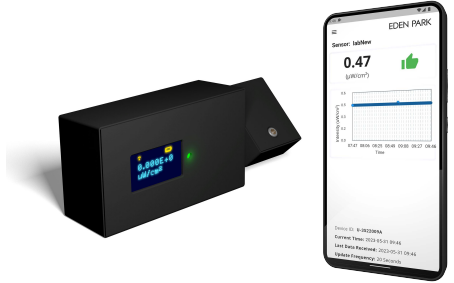
DLShield²²²™

Many office spaces have recessed lighting that is hard-wired to a power source. DLShield²²² features thin-panel Far-UVC technology integrated into a “canless” recessed lighting design that allows it to be used in place of existing recessed lighting installations. Each DLShield²²² fixture provides safe and effective continuous disinfection for a 10'x10' space with ceilings up to 12' in height. The built-in LED lighting is designed for adjustable CCT (3500 K, 4000 K, 5000 K).



MeasureShield²²²™

How do you measure the output of Eden Park's Far-UVC 222 nm technology? Simple. MeasureShield²²² is an innovative hand-held wireless device that connects via Bluetooth to a mobile app to easily and precisely record and report output measurements for each installed continuous disinfection fixture.



Specifications

- Compact, lightweight designs for flexible applications
- Patented microcavity, microplasma 222 nm technology
- IEC 62471 compliant (Risk Group Zero at 1.5 m away)
- Meets FDA UV guidelines
- UL approved

It all starts with patented technology

Lamp	222 nm FAR UV-C 10W
Voltage	120V-277V AC power supply
Primary output wavelength	222 nm
Mercury content	0
Lead content	0
Lamp life	One-year life expectancy on average, depending on usage
Ozone (UL.867)	< 0.005 ppm



MADE IN USA

www.edenpark.com
contact@edenpark.com
217-403-1866

903 N Country Fair Drive
Champaign, IL 61821

About Eden Park

Eden Park creates safe and healthy indoor spaces for at-risk communities and workforces around the world. We do this by deploying safe and effective Far-UVC 222 nm technology to deliver continuous disinfection for air and surfaces at leading hospitals, assisted living facilities, transportation, and education systems.

For more information visit our website at www.edenpark.com, email us at contact@edenpark.com, or call 217-403-1866.

EDEN PARK